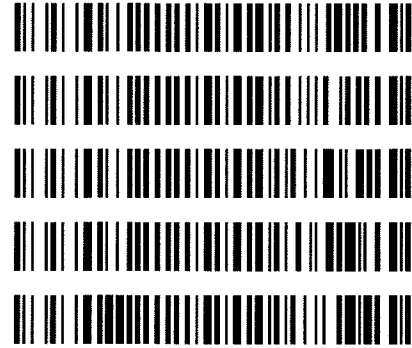


**Worklist: 1502**

<u>LAB CASE</u>	<u>ITEM</u>	<u>TASK ID</u>	<u>DESCRIPTION</u>
C2017-0103	1	75110	AM 3 Urine Carboxy-THC
C2017-0104	1	75111	AM 3 Urine Carboxy-THC
C2017-0124	1	75112	AM 3 Urine Carboxy-THC
C2017-0136	1	75118	AM 3 Urine Carboxy-THC
P2017-0136	2	75119	AM 3 Urine Carboxy-THC



A handwritten signature or set of initials in black ink, located in the bottom right corner of the page.

Area Percent Report

Data Path : D:\DATA\2017\1-25-17 Gen Drug\  
 Data File : 02301026.D  
 Acq On : 25 Jan 2017 23:08  
 Operator :  
 Sample : BRC3  
 Misc : AM 3: lot 68430  
 ALS Vial : 23 Sample Multiplier: 1

Integration Parameters: autoint1.e  
 Integrator: ChemStation

Method : D:\DATA\2016\852016a ta\psilocyn .D\TOXI-A 10115.M  
 Title :

Signal : EIC Ion 371.00 (370.70 to 371.70): 02301026.D\data.ms

peak #	R.T. min	first scan	max scan	last scan	PK TY	peak height	corr. area	corr. % max.	% of total
1	3.901	14	22	30	PV	23512	359876	17.94%	13.964%
2	3.967	30	35	45	PV	2946	59669	2.98%	2.315%
3	<u>4.694</u>	162	170	186	VV	117580	<u>2005515</u>	100.00%	77.820%
4	4.908	194	209	222	BB	8338	152072	7.58%	5.901%

Sum of corrected areas: 2577132

Signal : EIC Ion 473.00 (472.70 to 473.70): 02301026.D\data.ms

peak #	R.T. min	first scan	max scan	last scan	PK TY	peak height	corr. area	corr. % max.	% of total
1	4.696	162	170	192	VB	50047	<u>908563</u>	100.00%	52.828%
2	4.910	202	210	221	BV	5476	100585	11.07%	5.848%
3	5.177	237	259	284	BB	34824	710714	78.22%	41.324%

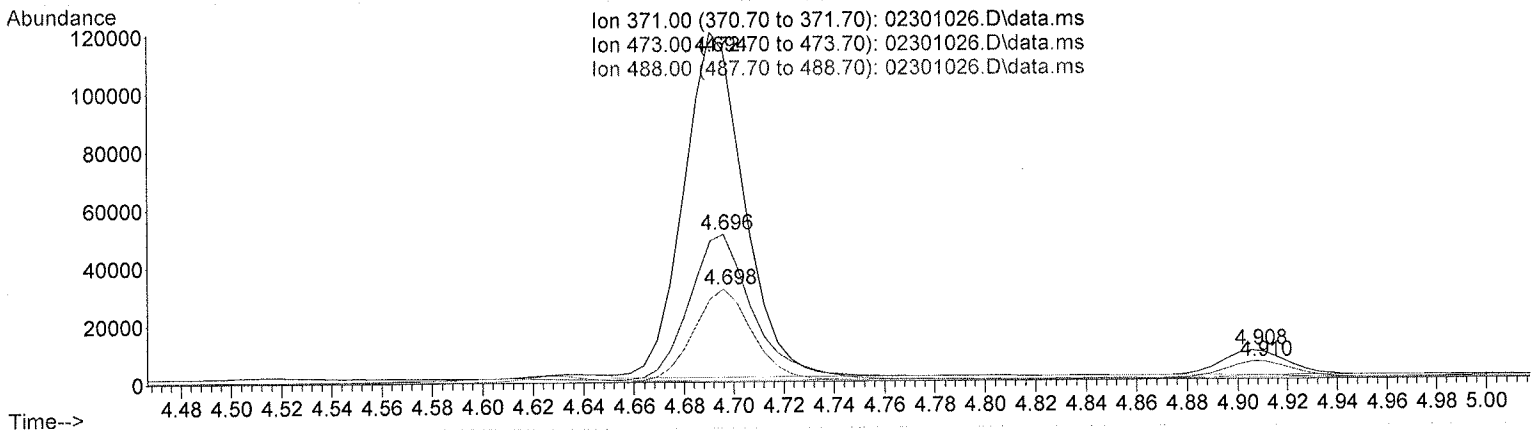
Sum of corrected areas: 1719862

Signal : EIC Ion 488.00 (487.70 to 488.70): 02301026.D\data.ms

peak #	R.T. min	first scan	max scan	last scan	PK TY	peak height	corr. area	corr. % max.	% of total
1	4.698	163	170	180	VV	30779	<u>511949</u>	100.00%	90.249%
2	5.178	252	260	270	BB	2798	55315	10.80%	9.751%

Sum of corrected areas: 567264

TOXI-A 10115.M Wed Jan 25 23:17:55 2017



*[Handwritten signature]*

Area Percent Report

Data Path : D:\DATA\2017\1-25-17 Gen Drug\  
 Data File : 02201025.D  
 Acq On : 25 Jan 2017 22:59  
 Operator :  
 Sample : NCMJ  
 Misc : AM 3:Neg Lot 121616  
 ALS Vial : 22 Sample Multiplier: 1

Integration Parameters: autoint1.e  
 Integrator: ChemStation

Method : D:\DATA\2016\852016a ta\psilocyn .D\TOXI-A 10115.M  
 Title :

Signal : EIC Ion 371.00 (370.70 to 371.70): 02201025.D\data.ms

peak #	R.T. min	first scan	max scan	last scan	PK TY	peak height	corr. area	corr. % max.	% of total
1	3.903	15	23	31	PV	87472	1174296	100.00%	95.793%
2	4.635	147	159	166	BV	2806	51573	4.39%	4.207%

Sum of corrected areas: 1225869

Signal : EIC Ion 473.00 (472.70 to 473.70): 02201025.D\data.ms

peak #	R.T. min	first scan	max scan	last scan	PK TY	peak height	corr. area	corr. % max.	% of total
1	3.906	10	23	31	BV	3503	50502	5.01%	4.774%
2	5.179	243	260	294	BB	47219	1007272	100.00%	95.226%

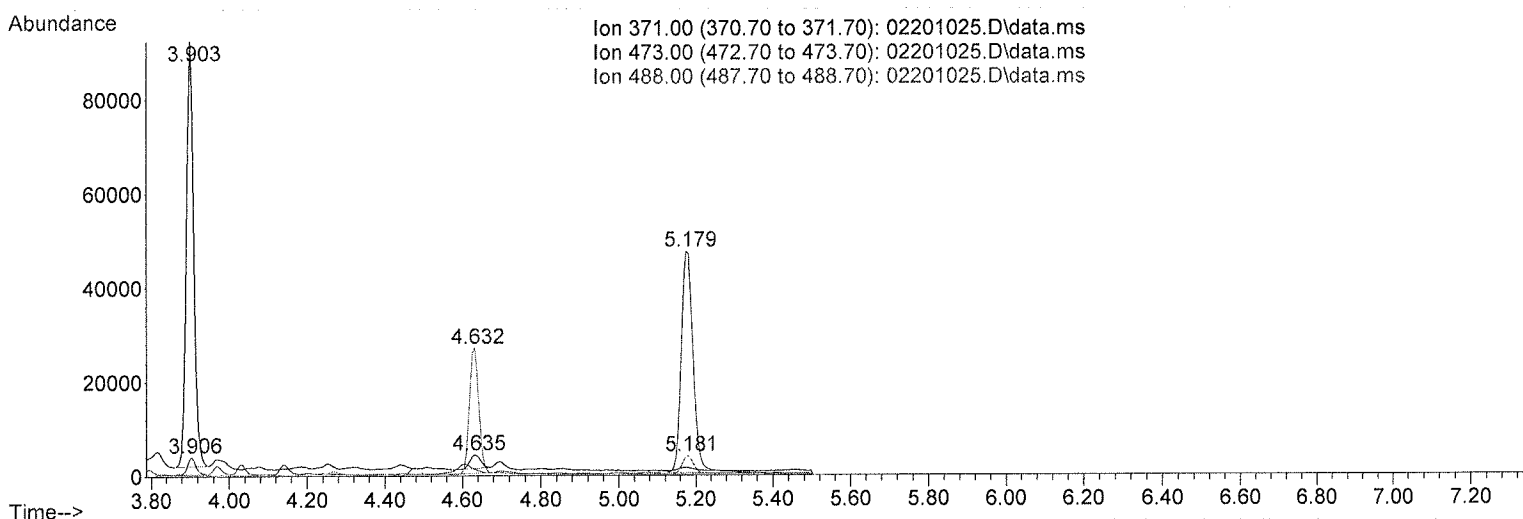
Sum of corrected areas: 1057774

Signal : EIC Ion 488.00 (487.70 to 488.70): 02201025.D\data.ms

peak #	R.T. min	first scan	max scan	last scan	PK TY	peak height	corr. area	corr. % max.	% of total
1	4.632	139	158	168	BV	26392	444666	100.00%	84.986%
2	5.181	251	260	274	BB	3824	78555	17.67%	15.014%

Sum of corrected areas: 523221

TOXI-A 10115.M Wed Jan 25 23:17:35 2017



*[Handwritten signature]*

Area Percent Report

Data Path : D:\DATA\2017\1-25-17 Gen Drug\  
 Data File : 02101037.D  
 Acq On : 26 Jan 2017 00:50  
 Operator :  
 Sample : PCMJ  
 Misc : AM 3: lot FE04312-01 WS in Neg Lot 121616  
 ALS Vial : 21 Sample Multiplier: 1

Integration Parameters: autoint1.e  
 Integrator: ChemStation

Method : D:\DATA\2016\852016a ta\psilocyn .D\TOXI-A 10115.M  
 Title :

Signal : EIC Ion 371.00 (370.70 to 371.70): 02101037.D\data.ms

peak #	R.T. min	first scan	max scan	last scan	PK TY	peak height	corr. area	corr. % max.	% of total
1	3.902	15	22	31	PV	82554	1161377	5.22%	4.951%
2	4.633	145	158	161	BV	2421	34450	0.15%	0.147%
3	<u>4.695</u>	161	170	204	VV	1279155	<u>22260508</u>	100.00%	94.902%

Sum of corrected areas: 23456335

Signal : EIC Ion 473.00 (472.70 to 473.70): 02101037.D\data.ms

peak #	R.T. min	first scan	max scan	last scan	PK TY	peak height	corr. area	corr. % max.	% of total
1	3.905	13	23	31	BV	3634	55150	0.59%	0.533%
2	4.141	59	67	75	BV 2	3302	52325	0.56%	0.506%
3	4.697	161	170	195	PV	542253	<u>9365941</u>	100.00%	90.583%
4	5.177	235	259	290	VB	39358	866218	9.25%	8.378%

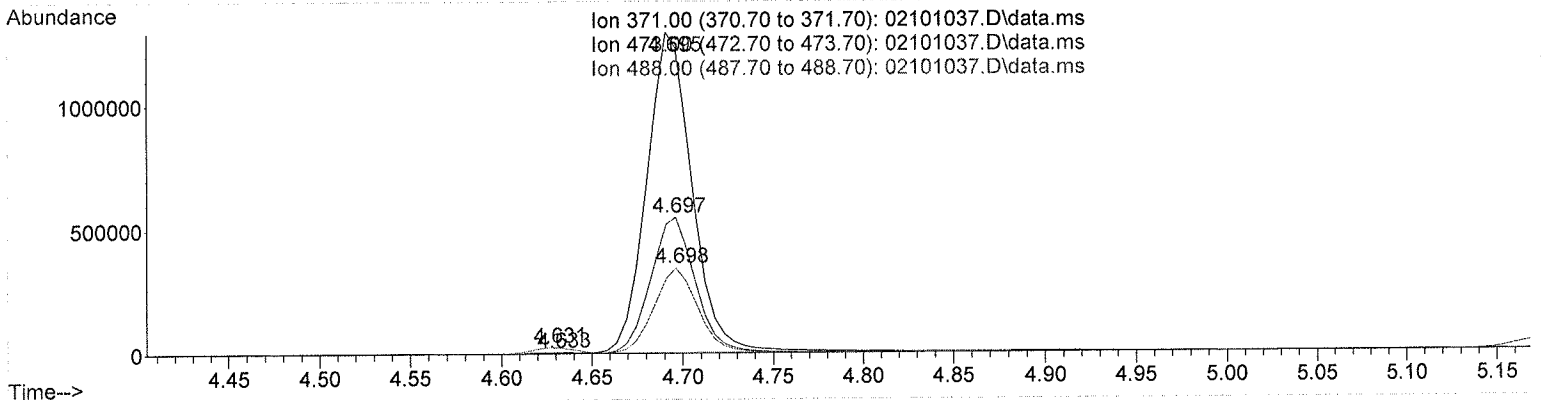
Sum of corrected areas: 10339635

Signal : EIC Ion 488.00 (487.70 to 488.70): 02101037.D\data.ms

peak #	R.T. min	first scan	max scan	last scan	PK TY	peak height	corr. area	corr. % max.	% of total
1	4.631	149	158	163	BV	24660	422097	7.25%	6.693%
2	4.698	163	170	205	VB	335149	<u>5820425</u>	100.00%	92.291%
3	5.178	252	260	275	BB	3120	64100	1.10%	1.016%

Sum of corrected areas: 6306622

TOXI-A 10115.M Thu Jan 26 09:23:35 2017



*(Handwritten signature)*

Area Percent Report

Data Path : D:\DATA\2017\1-25-17 Gen Drug\  
 Data File : 02101024.D  
 Acq On : 25 Jan 2017 22:50  
 Operator :  
 Sample : PCMJ  
 Misc : AM 3: lot FE04312-01 WS in Neg Lot 121616  
 ALS Vial : 21 Sample Multiplier: 1

Integration Parameters: autoint1.e  
 Integrator: ChemStation

Method : D:\DATA\2016\852016a ta\psilocyn .D\TOXI-A 10115.M  
 Title :

Signal : EIC Ion 371.00 (370.70 to 371.70): 02101024.D\data.ms

peak #	R.T. min	first scan	max scan	last scan	PK TY	peak height	corr. area	corr. % max.	% of total
1	3.901	14	22	31	PV	92015	1255773	4.90%	4.662%
2	4.633	146	158	161	BV	2728	37763	0.15%	0.140%
3	4.695	161	170	195	VV	1515865	25643225	100.00%	95.198%

Sum of corrected areas: 26936762

Signal : EIC Ion 473.00 (472.70 to 473.70): 02101024.D\data.ms

peak #	R.T. min	first scan	max scan	last scan	PK TY	peak height	corr. area	corr. % max.	% of total
1	3.904	8	23	30	BV	4380	59226	0.55%	0.492%
2	4.141	57	67	75	BV	3806	59303	0.55%	0.493%
3	4.610	140	154	161	BV	2571	48336	0.45%	0.402%
4	4.696	161	170	194	PV	638770	10823702	100.00%	89.943%
5	5.178	246	260	294	BB	49235	1043388	9.64%	8.670%

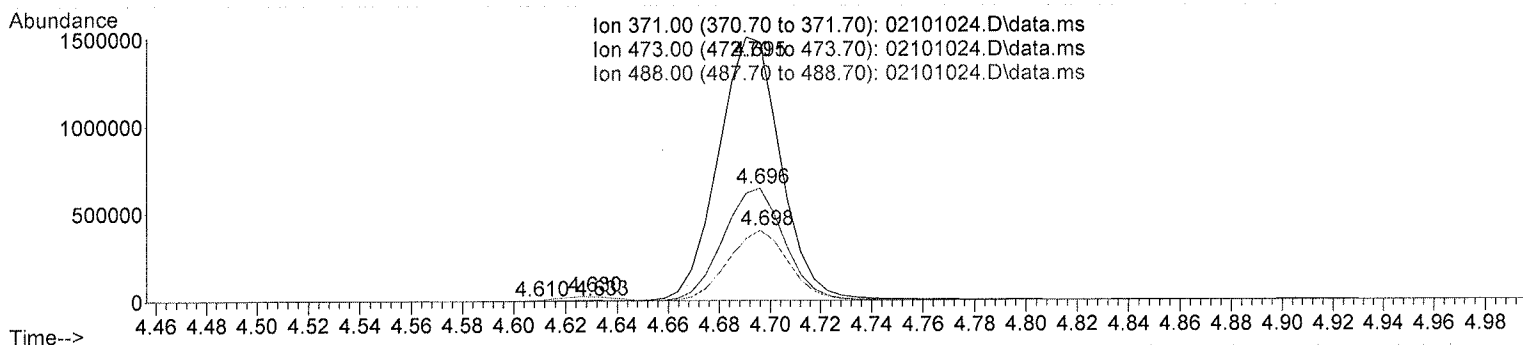
Sum of corrected areas: 12033956

Signal : EIC Ion 488.00 (487.70 to 488.70): 02101024.D\data.ms

peak #	R.T. min	first scan	max scan	last scan	PK TY	peak height	corr. area	corr. % max.	% of total
1	4.630	149	158	163	BV	26328	444329	6.60%	6.125%
2	4.698	163	170	204	VB	393012	6727319	100.00%	92.729%
3	5.179	249	260	274	BB	4055	83151	1.24%	1.146%

Sum of corrected areas: 7254799

TOXI-A 10115.M Wed Jan 25 23:17:19 2017



*[Handwritten signature]*

## 2.4.4 Carboxy-THC QC Calculations

Run Date: 1/25/2017

Case Calculations:

Lab Case #: BRC3-68430

EIC Ion 371 Corr. Area:	<u>2005515</u>	
EIC Ion 473 Corr. Area:	<u>908563</u>	473:371 Ratio: <u>0.453</u>
EIC Ion 488 Corr. Area:	<u>511949</u>	488:371 Ratio: <u>0.255</u>

Quality Control Calculations:

Retention Time acceptable range: 4.595 to 4.795

	<i>1st ctrl</i>	<i>2nd ctrl</i>
EIC Ion 371 Corr. Area:	<u>22260508</u>	<u>25643225</u>
EIC Ion 473 Corr. Area:	<u>9365941</u>	<u>10823702</u>
EIC Ion 488 Corr. Area:	<u>5820425</u>	<u>6727319</u>

Approximate minimum corrected area of 371 ion: ~ 4452102

Ratio of 473:371			
<i>1st ctrl</i>	<u>0.421</u>	<i>2nd ctrl</i>	<u>0.422</u>
		avg.	<u>0.421</u>

Accepted Range  
(+/- 20%) 0.337 - 0.506

Ratio of 488:371			
<i>1st ctrl</i>	<u>0.261</u>	<i>2nd ctrl</i>	<u>0.262</u>
		avg	<u>0.262</u>

Accepted Range  
(+/- 20%): 0.210 - 0.314

Carboxy-calculation sheet  
Revision 0 effective date 10/23/13  
Issuing authority: Quality Manager